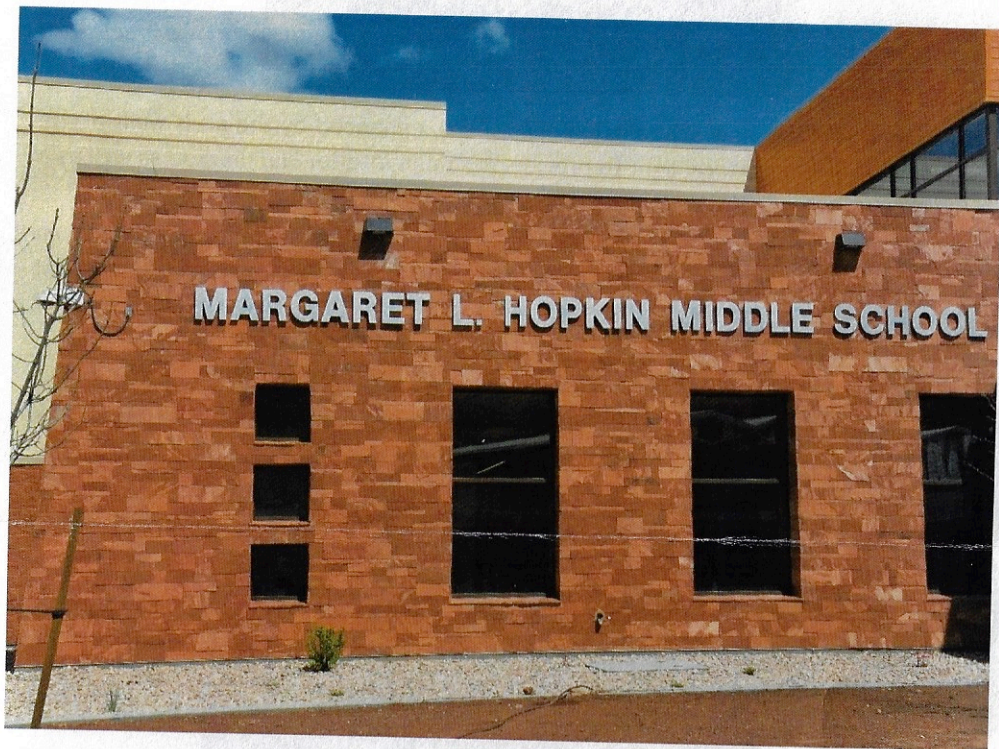


MARGARET L. HOPKIN MIDDLE SCHOOL



SELF-GUIDED TOUR

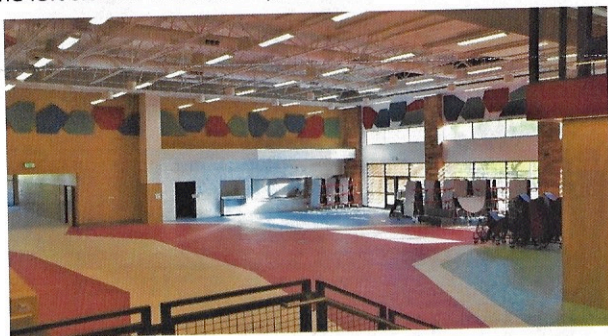
Welcome to Grand County's new middle school, the Margaret L. Hopkin Middle School. The unique design of this school was approved by the School Board, created by MHTN Architects of Salt Lake City, and is distinctly focused on providing an enhanced learning environment for its students. Within our new school, you will find spacious classrooms, a lecture hall, a state-of-the-art cafeteria, an acoustically perfect music room, and a world-class gymnasium intended for both school and community use.



The emphasis in our new school is on open space, enhanced by the glass walls of the classrooms, allowing natural light to provide maximum interior illumination as well as a collaborative learning environment.

Upon entering Margaret L. Hopkin Middle School, to your immediate right, you will see the school offices and to your left, you will find the ABS (Academic & Behavioral Support) Center. Continuing forward and through the main-hall intersection, you will find the Digital Science & Career Studies, Art, and Utah History classrooms.

Coming out of that hallway and turning right, within thirty feet, you arrive at a spacious opening which is the school's lunch area, adjoined by the cafeteria. Just past the lunchroom, to the left side of the hallway, is the Music room.



Walking back the way you came and continuing past the intersection by the offices, you will be headed toward the spacious and multi-use gymnasium that will be on your right.

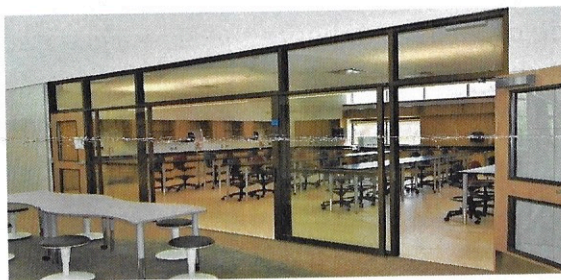
The other seventh-grade hallway will be on your left. Also on the left, halfway between the school offices and the gymnasium, is the lecture hall which has a seating capacity of 179.





Use the staircase or elevator to reach the second floor which houses the classrooms for our eighth-grade. The wood gym floor decor on the north wall of the staircase is from the old Middle School gymnasium and serves to maintain some of Moab's Middle School history in the new school.

You may also note that the staircase serves as both, a staircase leading between the first and second floor, and a seating area where students may mingle and share ideas and concepts about the materials they are studying, or for personal time for thought.



At the top of the stairs, the eighth-grade wing extends to the east end of the building. In that wing, as in other parts of the school, the walls are glass, allowing maximum natural light penetration into the classrooms. The first classroom to the right, when entering that hall, is the eighth-grade science room (directly above the seventh-grade science room). Both seventh and eighth-grade science rooms are top-notch classroom and laboratory facilities. Following the hall toward its end, you will see the other classrooms that will serve the eighth grade.



When exiting the eighth-grade classroom hallway, and turning to the right, you will walk toward the staircase that leads to the lunch area. On the left side of that hallway is the school's library which, like everything in the Margaret L. Hopkin Middle School, is world-class and exceptionally designed with learning being the architect's primary focus.



On the other side of the hall, opposite the library is a glass-enclosed conference room that overlooks the lunch area and, as most the classrooms, the glass enclosure provides natural lighting for meetings taking place in the conference room.

Outside recreation and exercise for students are provided by a multi-position exercise device, as well as several half-court basketball standards. There will also a number of four-square courts for those who prefer activities other than basketball.



We welcome the Moab community to our new, state-of-the-art educational facility, the Margaret L. Hopkin Middle School.